

2 PORT ATP ROOF CAP MOUNTING QUICK START GUIDE

CONTENTS

- A. 2 Port ATP Roof Cap (CAP1001)
- B. ATP Receptacle Boot
- C. VHB Tape
- D. Roof Cap Mounting Screws

NOT INCLUDED

- Solar Wire Harness (6 AWG recommended)
**included in some kits*
- Self-Leveling Adhesive
- Wire Nut (for series wiring only)

STEP 1: PICK A LOCATION AND METHOD OF CABLE ENTRY

- A. Ensure no solar panels are connected to the roof cap at this time.
- B. Identify best location to install roof cap. No more than 10 linear feet from Charge Controller.
- C. If wiring through roof, continue with steps D-G.
- D. Using a step drill bit, knock out the plastic circle in the bottom of the roof cap as shown in FIGURE 1.
- E. Drill through the roof using the 1" hole saw.
- F. Deburr hole if sharp edges exist.
- G. Ensure wires do not make contact to sides of newly drilled hole.

**Zamp Solar recommends using a 1" grommet to protect the wiring abrasion.*

**Optional wire routing is available through the knockouts located on the sides of the roof cap. 3/4" NPT cable glands are recommended to protect wire sheathing.*

TOOLS NEEDED

- Drill
- 1" Hole saw
- #2 Phillips Head Screwdriver**
- Step drill bit
- Razor Blade
- 3/16" Drill bit
- Wire Strippers

STEP 2: ROOF CAP MOUNTING OPTIONS

Option 1: Mount the Screws

1. Using a 3/16" drill bit, drill holes through the base of the roof cap in the mounting hole locations you intend to use. [Figure 1]
2. Liberally apply self-leveling sealant to the bottom of the roof cap.
3. Mount the roof cap to the roof of the vehicle with provided fasteners.
4. Allow time for sealant to fully cure.

Option 2: Mount with VHB Tape

1. See [VHB preparation instructions](#).
2. Apply VHB strips to bottom of roof cap.
3. Liberally apply self-leveling sealant around perimeter of the bottom of the roof cap for a weatherproof seal.
4. Firmly press down on the base of the roof cap to allow bonding to occur.

**100% VHB bond strength requires 72 hours cure time at room temp.*

- H. Using the 4 screws provided (bagged) with the roof cap, secure the lid of the roof cap to the base of the roof cap.
- I. Use the ATP Receptacle Boot (B) to cover any unused receptacles.

STEP 3: WIRING THE ROOF CAP

- J. Run the stripped side of the wires through the hole created in the roof cap.
**Run wire through cable glands for side installation.*
- K. Using wire strippers, strip back wires approximately 1/2."
- L. Using a Phillips head screwdriver, connect the positive solar wire to the positive busbar of the roof cap and the negative solar wire to the negative busbar. [Figure 1]
- M. IF SERIES CONNECTION IS REQUIRED, use a wire nut to connect the ATP roof cap in series as shown below. [FIGURE 3]

2 PORT ATP ROOF CAP MOUNTING QUICK START GUIDE

FIGURE: 1

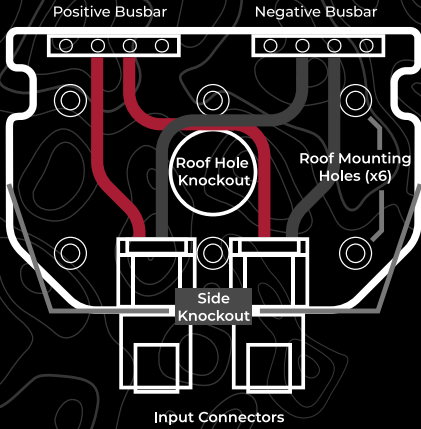


FIGURE: 2

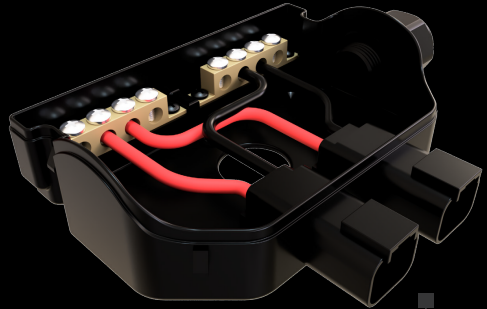


FIGURE: 3

